

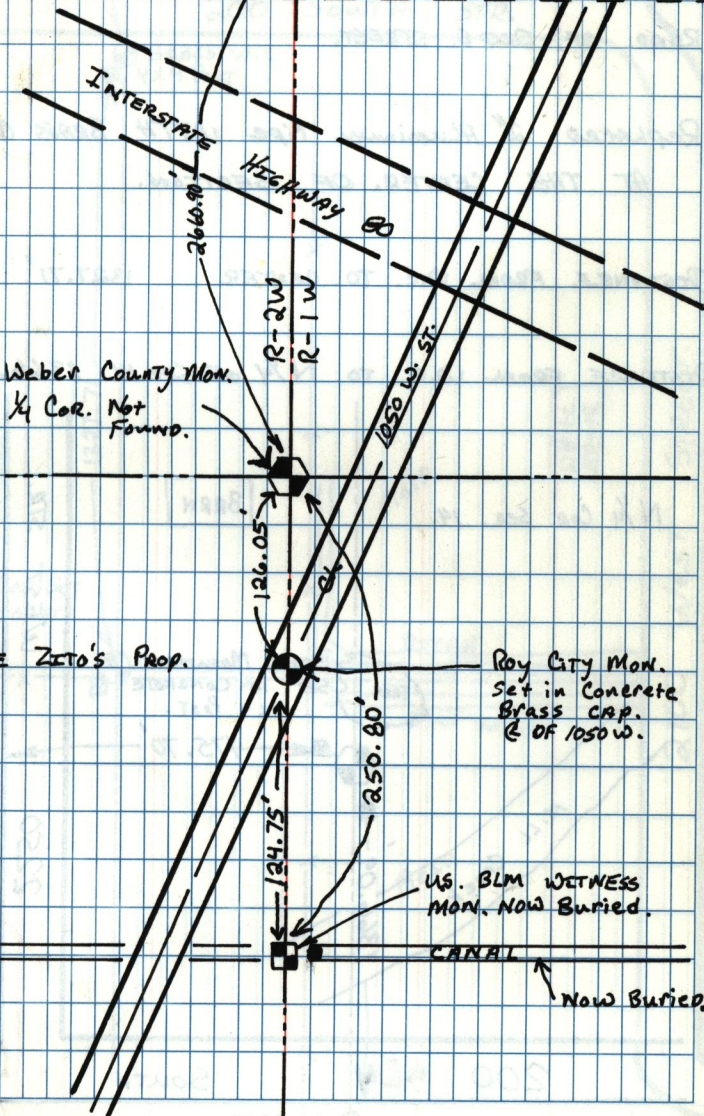
T. 5N, R. 2W.

T. 5N, R. 1W. MC 45-74

EAST 1/4 Cor: Sec. 13, West 1/4 Cor: Sec. 18
Sec. Cor.

RIVERDALE ROAD.

INFLO UPSTAIRS FROM
ROY CITY AND FIELD
CHECK!



Weber County Mon.
1/4 Cor. Not Found.

JOE ZITO'S Prop.

ROY CITY Mon.
Set in Concrete
Brass Cap.
E OF 1050 W.

US. BLM WITNESS
MON. NOW BURIED.

Now Buried.